

CAMERA SHOTS!

EXTREME WIDE SHOT

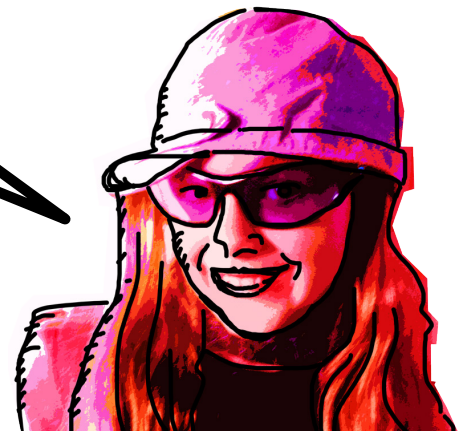


AN EXTREME WIDE SHOT GIVES AN OVERVIEW OF THE SETTING. IT IS OFTEN THE SHOT USED IN THE FIRST PANEL AND IS USED TO SITUATE THE STORY. IT IS SOMETIMES CALLED A PANORAMIC SHOT.

WIDE SHOT



A WIDE SHOT IS SIMILAR TO AN EXTREME WIDE SHOT, JUST NOT AS FAR.





MEDIUM SHOT

A MEDIUM SHOT FRAMES THE CHARACTER FROM HEAD TO TOE.



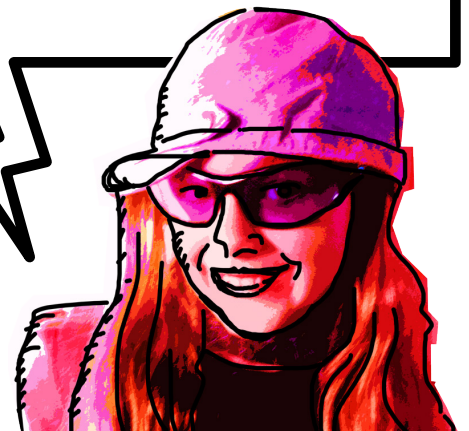
AMERICAN SHOT

AN AMERICAN SHOT FRAMES A CHARACTER FROM HEAD TO KNEES. IT WAS INVENTED FOR WESTERNS IN ORDER TO SHOW THE COWBOY'S WEAPON.



WAIST SHOT

A WAIST SHOT FRAMES A CHARACTER FROM HEAD TO WAIST. IT SHOWS A CHARACTER'S FACIAL EXPRESSION AND BODY LANGUAGE.



CLOSE UP



A CLOSE UP FRAMES A CHARACTER FROM THE HEAD TO THE NECK TO SHOW THE CHARACTER'S EMOTIONS. A CLOSE UP CAN ALSO FRAME AN OBJECT IN ORDER TO HIGHLIGHT A PARTICULAR DETAIL.

EXTREME CLOSE UP



AN EXTREME CLOSE UP IS USED TO MAGNIFY IMPORTANT ELEMENTS.

